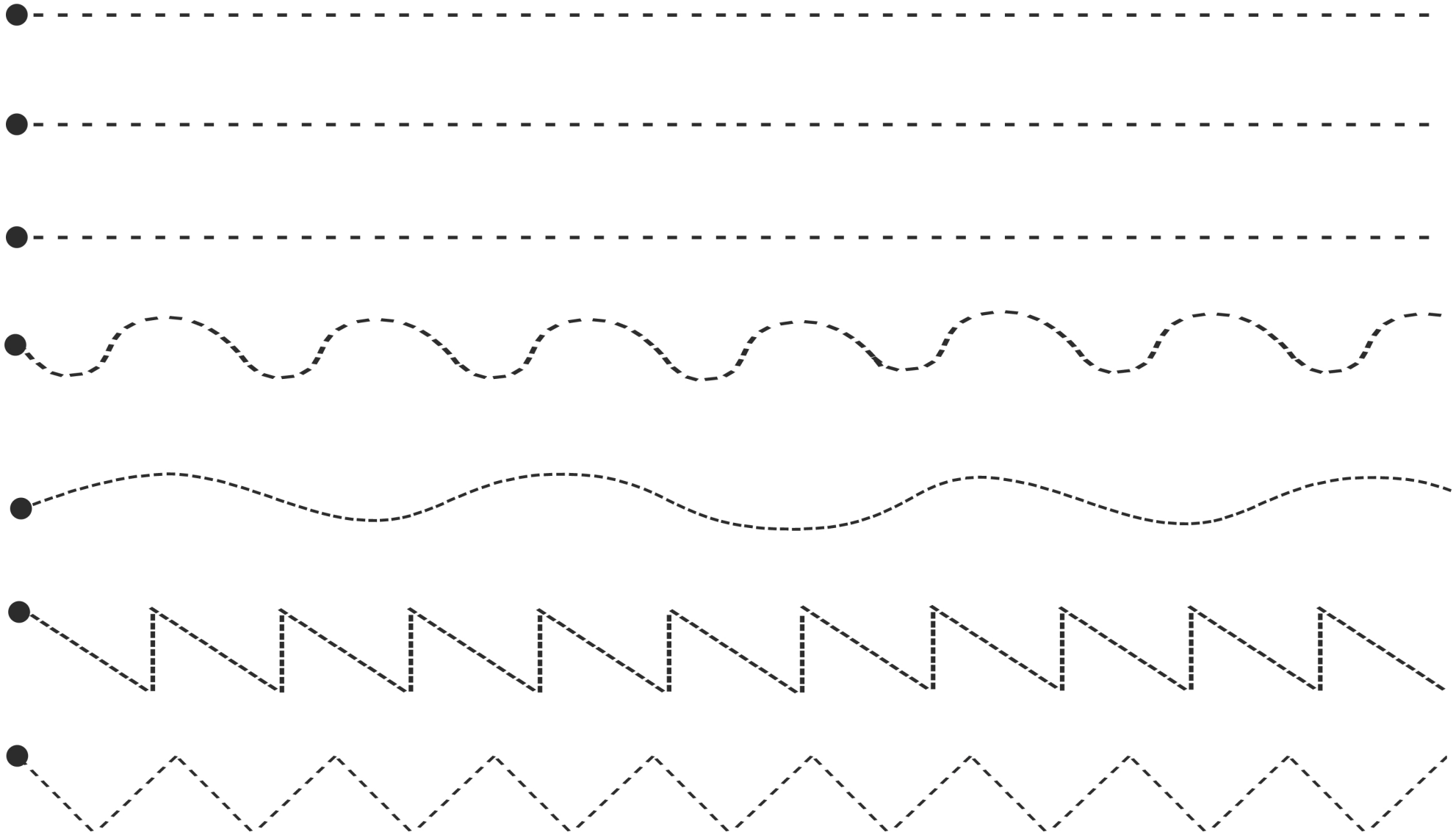


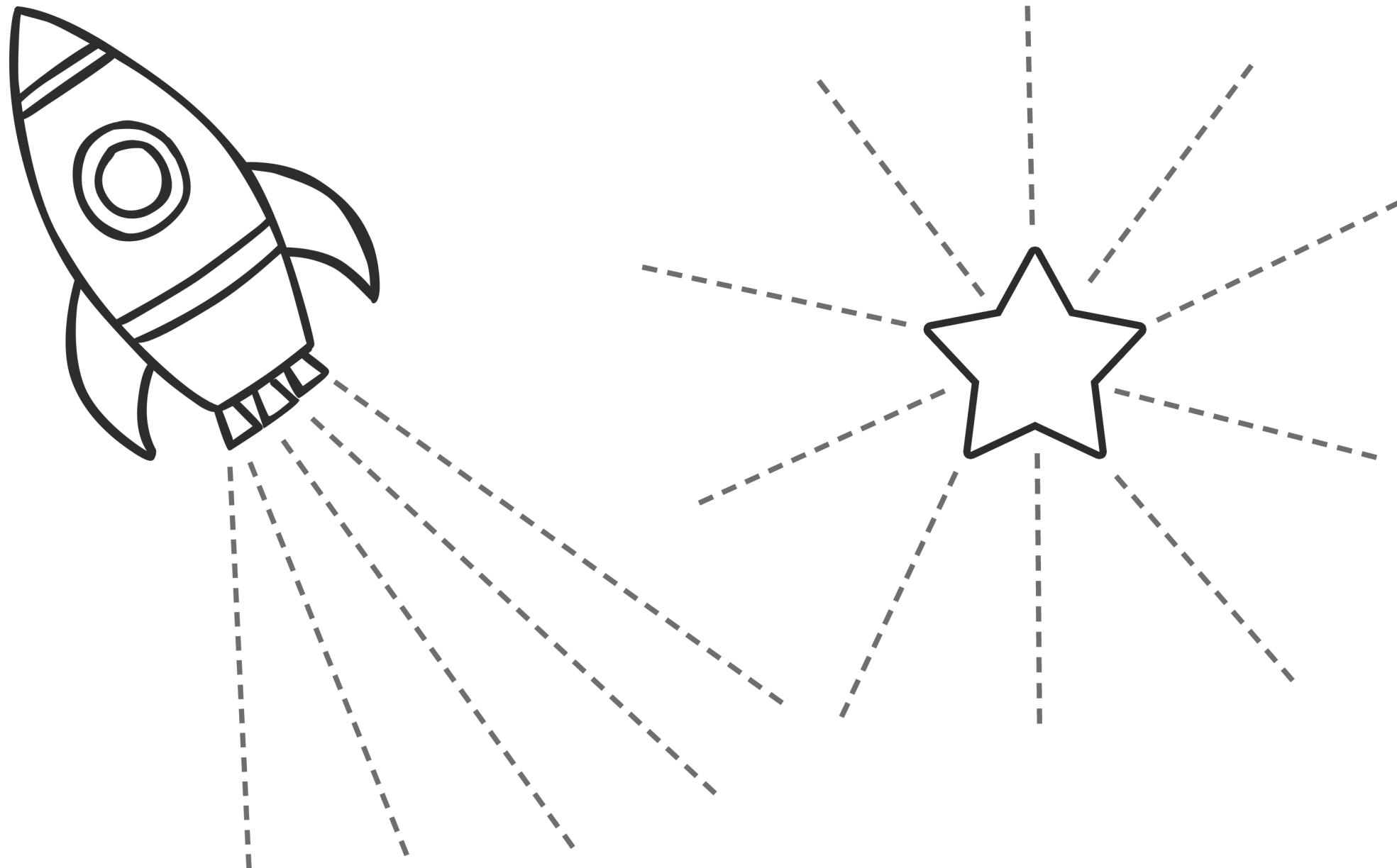
# Pencil Control

Start from the dots and trace the lines from left to right.



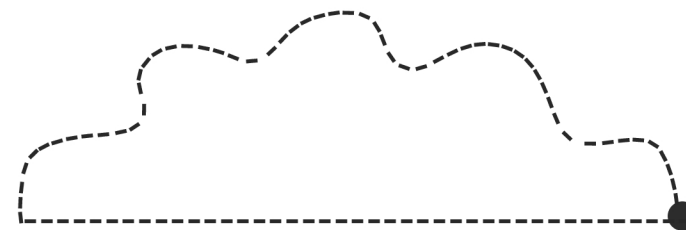
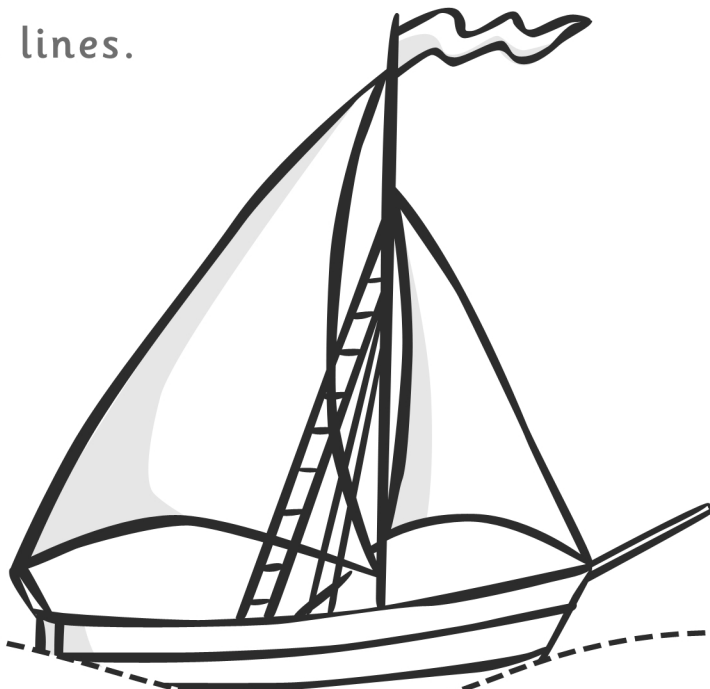
# Pencil Control 2

Trace over the dotted lines.



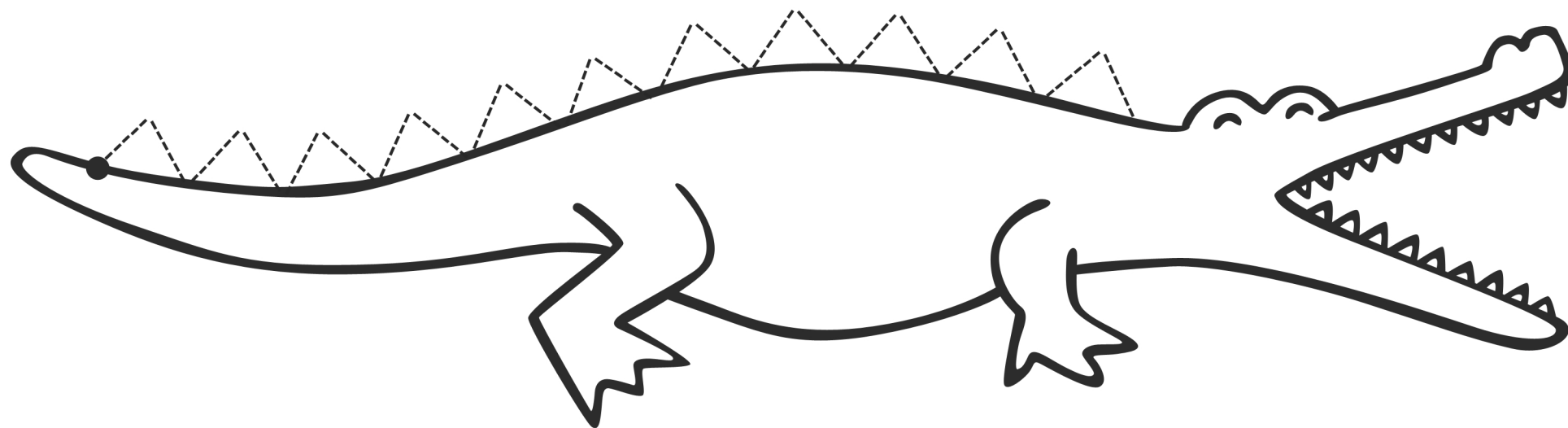
# Pencil Control 3

Trace over the dotted lines.



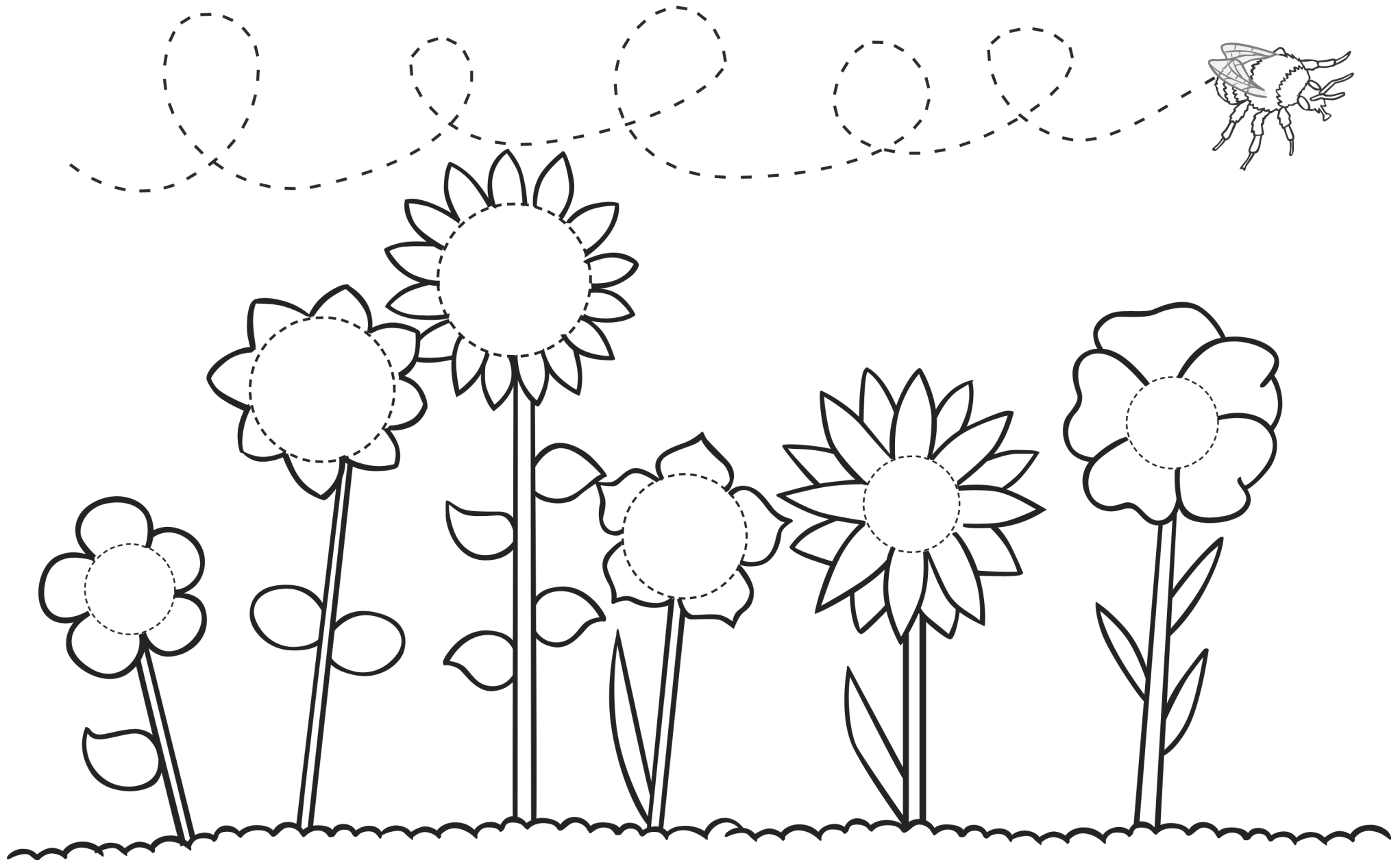
# Pencil Control 4

Trace over the dotted lines.



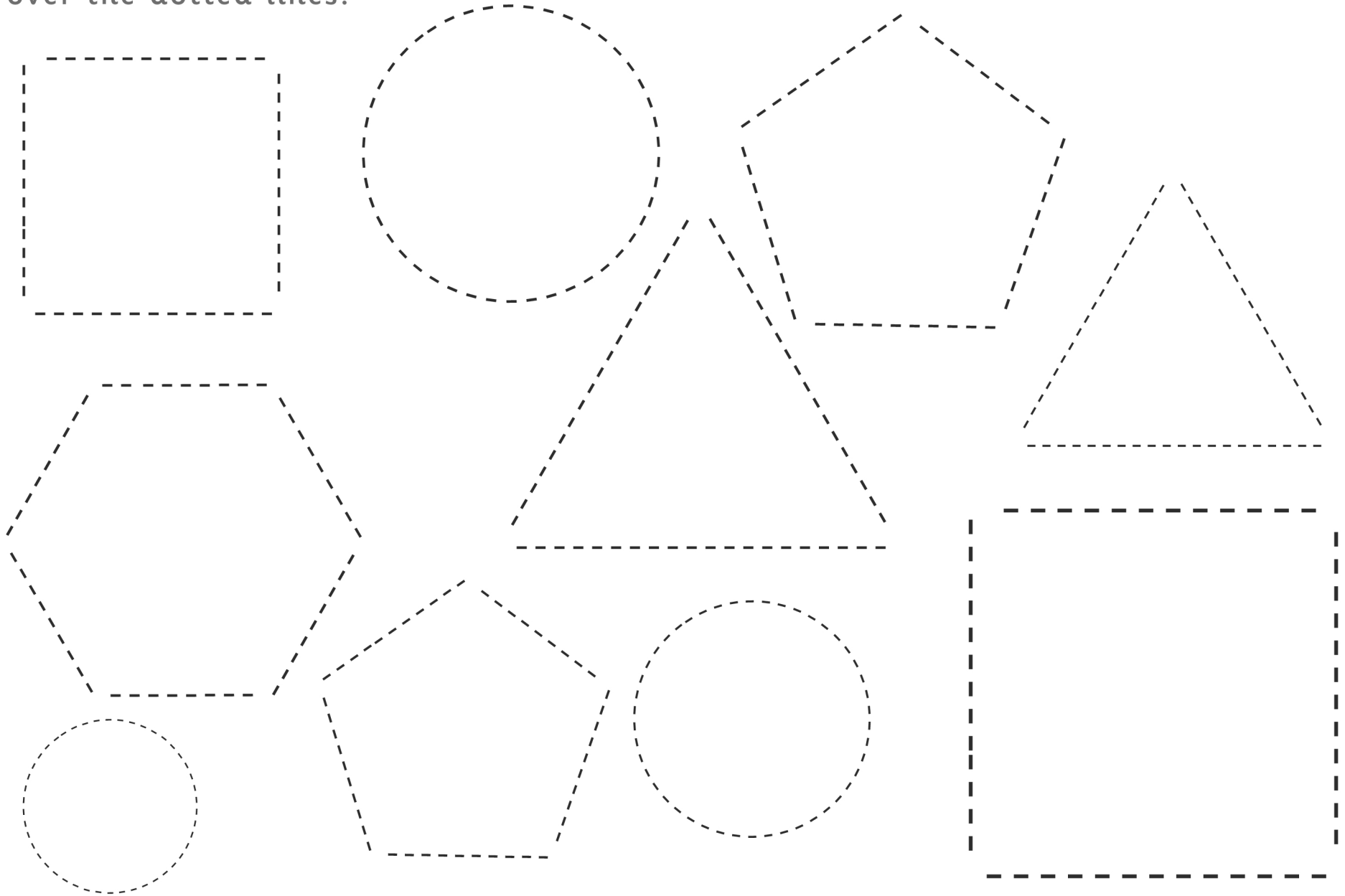
# Pencil Control 5

Trace over the dotted lines.



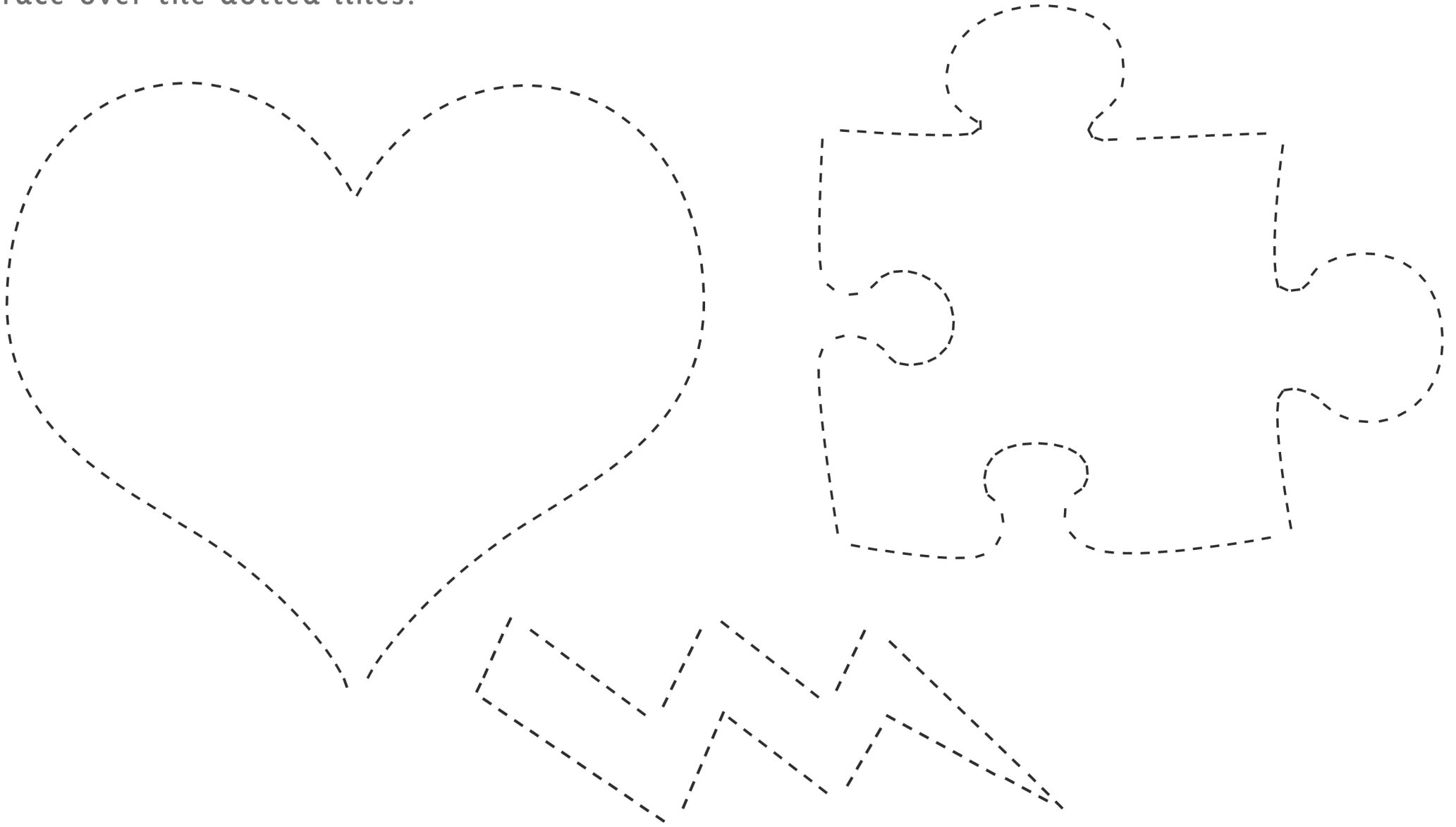
# Pencil Control 6

Trace over the dotted lines.



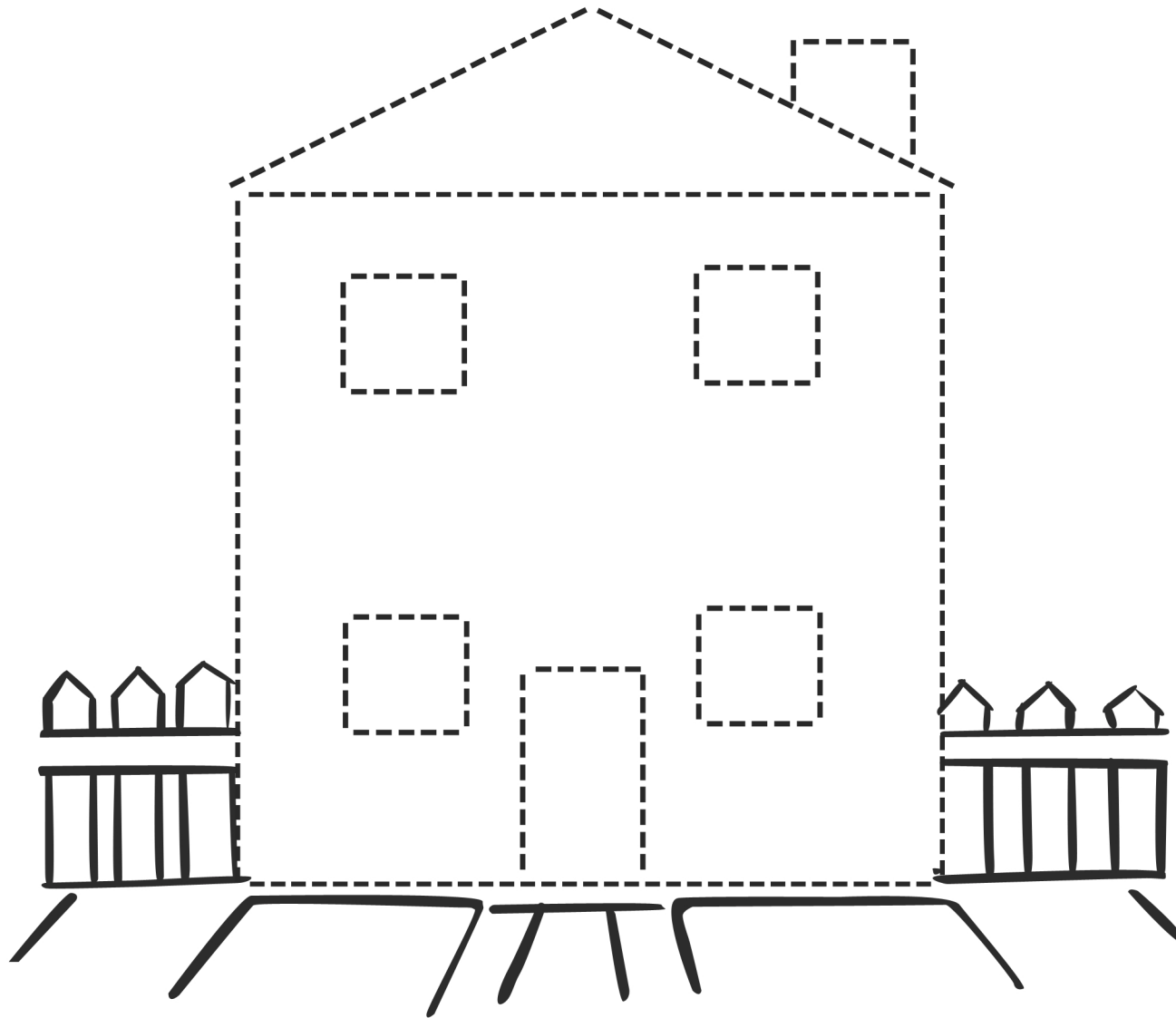
# Pencil Control 7

Trace over the dotted lines.



# Pencil Control 8

Trace over the dotted lines.





# Pencil Control 9

Trace over the dotted lines.

