



BREKETON PRIMARY SCHOOL Y2 RESIDENTIAL TO BEESTON

25th March – 26th March 2019

BEESTON RESIDENTIAL CENTRE





GENERAL INFORMATION

Staff

Mr McAulay

Mrs Pulle

Mrs McLean

Mrs Moore

Mrs Cross

Address of accommodation

Conway Centres : Beeston

Peckforton Road

Beeston

Tarporley

Cheshire

CW6 9TR

Phone: 01829 260535



TRANSPORT

Malbank Coaches

We will also have one staff car with us at the site.



ITINERARY: MONDAY 25TH MARCH

08:45 Arrive at school, in the hall.

09:30 Depart School

10:15 Arrive at centre

10:30 Explore the centre inside and outside

12:30 Packed lunch

13:30 Activity 1-Den building

16:45 Evening meal

17:30 Activity 2- Camp fire building/songs

19:30 Film and hot chocolate

21:00 Stories and bed

ITINERARY: TUESDAY 26TH MARCH

08:00 Breakfast

09:30 Activity 3- Bushcraft (shelter building, survival skills, collecting wood and fire lighting with dough sticks cooked over the fire)

12:30 Lunch at the centre

14:00 Leave centre

15:00 Arrive back at school





ACTIVITIES

Activities have been designed to support our topic work and some will be led by staff from the centre. We will be on the site for about half of these activities.

- Den building.
- Building fires.
- Orienteering.
- Bushcraft.









CATERING

Breakfast

A selection of cereals, juice and yoghurts are in the dining room for you to help yourselves to, followed by a hot option served at 8.15 am.

Lunch

Lunch is sandwiches, crisps, fruit or yoghurt and a hot option.

Evening Meal

The main meal is a 2 course meal with 2 options.

Snacks

Tea, coffee, squash, milk, hot chocolate, biscuits and toast are available at all times from the dining room.

Special Diets

Centre staff have a wealth of experience in providing meals for all sorts of allergies and intolerances from mild to serious conditions. We have already sent a list of allergies to the centre staff but if there is anything else you would like to discuss with us please let us know.





DANGER ELECTRICITY

Fire exit

BEESTON CELEBRATES 40 YEARS

Children's Kit List

A large holdall is preferable, if not a small suitcase will be adequate. It must be able to fit in the over head racks within the coach.

Please label the holdall/suitcase and all possible items of clothing. Please do not purchase new items.

Hand towel.

Toilet bag containing:

- Toothbrush;
- toothpaste;
- soap;
- flannel;
- hairbrush;

Pyjamas and slippers.

Socks and underwear (3-4 pairs).

3 pairs of trousers (not jeans).

3 jumpers.

Waterproof jacket and trousers (if you have them).

Wellington boots and trainers (boots to be in a carrier bag tied to rucksack).

Carrier bag for dirty clothes.

Hat, scarf and gloves.





Also...

A packed lunch and non fizzy drinks for the first day. This should be in a disposable bag and clearly named.

Children may bring ONE small bag of sweets and ONE small bar of chocolate. Children should be aware that they will be responsible for their litter.

A teddy bear.

A book.

Please note electronic devices are not allowed.



Communication

A member of staff will contact the school on arrival at Beeston.

Staff will also be in contact with the school over the return time of the party should it vary significantly from the itinerary.

In the case of an emergency please phone the school. Out of school hours please phone 07736630362.

Please ensure you have completed the contact forms so we have all emergency contact details for yourselves.



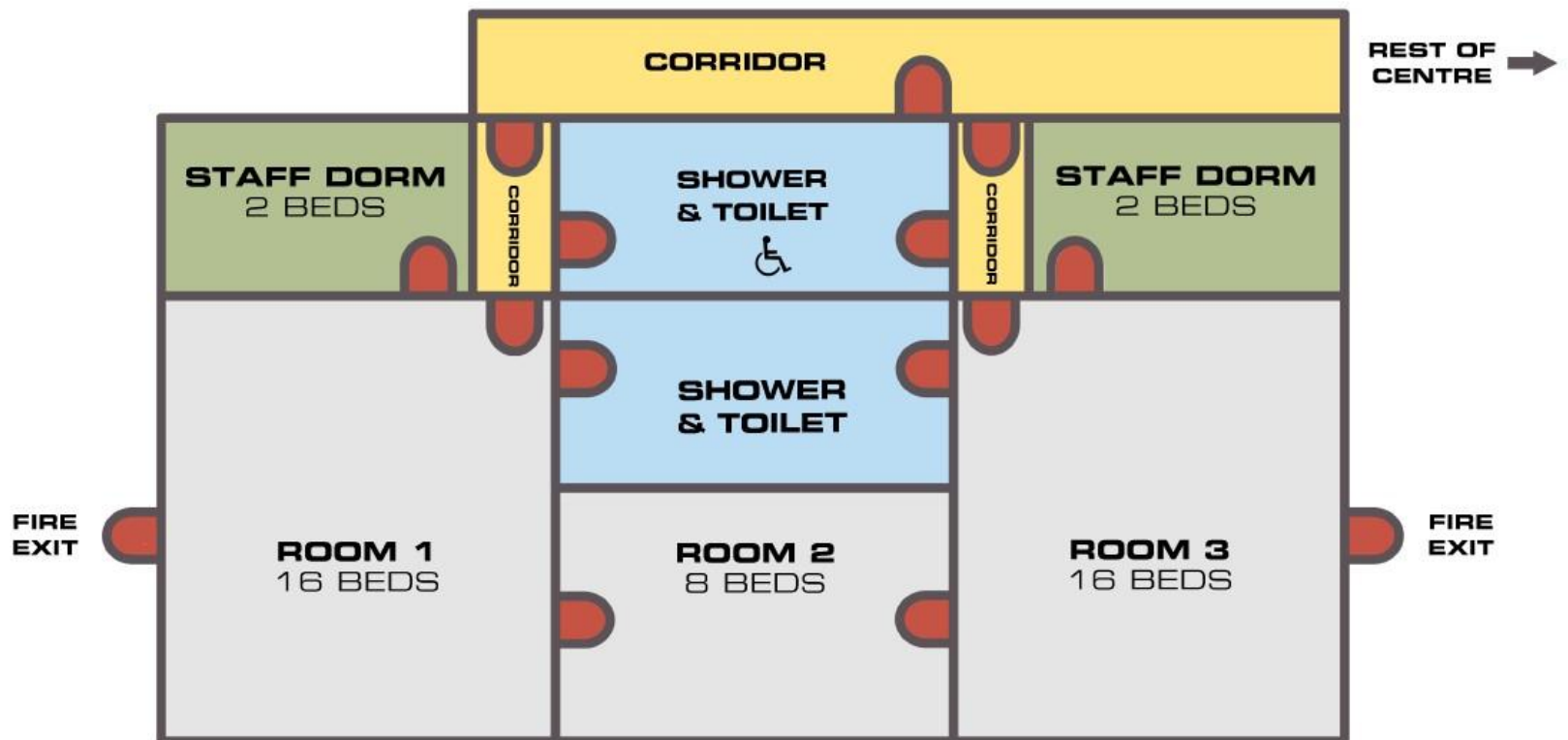
Groups and Rooms

Day groups: Each adult will be responsible for their group of children. The groups will be the same for both days.

Rooms: There is one dormitory for boys and one for girls. Staff rooms and bathrooms are situated right next to both dormitories.



BEESTON







Behaviour and Conduct

Children will be briefed before the trip of the standard of behaviour we expect of them.

Any cases of inappropriate behaviour will be dealt with in accordance with our behaviour policy and after the trip if necessary.

In cases of extreme inappropriate behaviour during the trip the school may notify parents in order to obtain their help with resolving the situation.



Health and Safety



- **The trip has been approved by Cheshire East's educational visits department.**
- **Risk assessments have been constructed and all adults involved will have a copy.**
- **Children will be briefed on health and safety issues such as fire procedures in the accommodation (on arrival)**
- **We will be the only school visiting the site. All doors are protected by a security code, which is changed after every visit.**
- **Staff will set an alarm so should a door be opened an alarm will sound.**
- **The school has full travel insurance through the tour operator.**

Medicines

Please send medicines mentioned on the medical questionnaire to Mrs Sant before the trip in a clearly labelled and preferably sealed sandwich style bag.

NB: If your child needs to take any medicines that are kept in the school, we will pack these the night before we depart.



ANY QUESTIONS?

