

PlayStation Network

Controls & Settings guide

Although you must be 18 to use the PS Network, you can create a sub-account for your child that is linked to your account and have full control over the restrictions placed on this sub-account restricting how they interact on the platform.



What do I need?

A web browser to set up a sub-account and not a PlayStation device. You will need to set up a parent/master PlayStation Network account that we will use to create a sub-account from.

Restrictions you can apply



Browser Access



Chatting



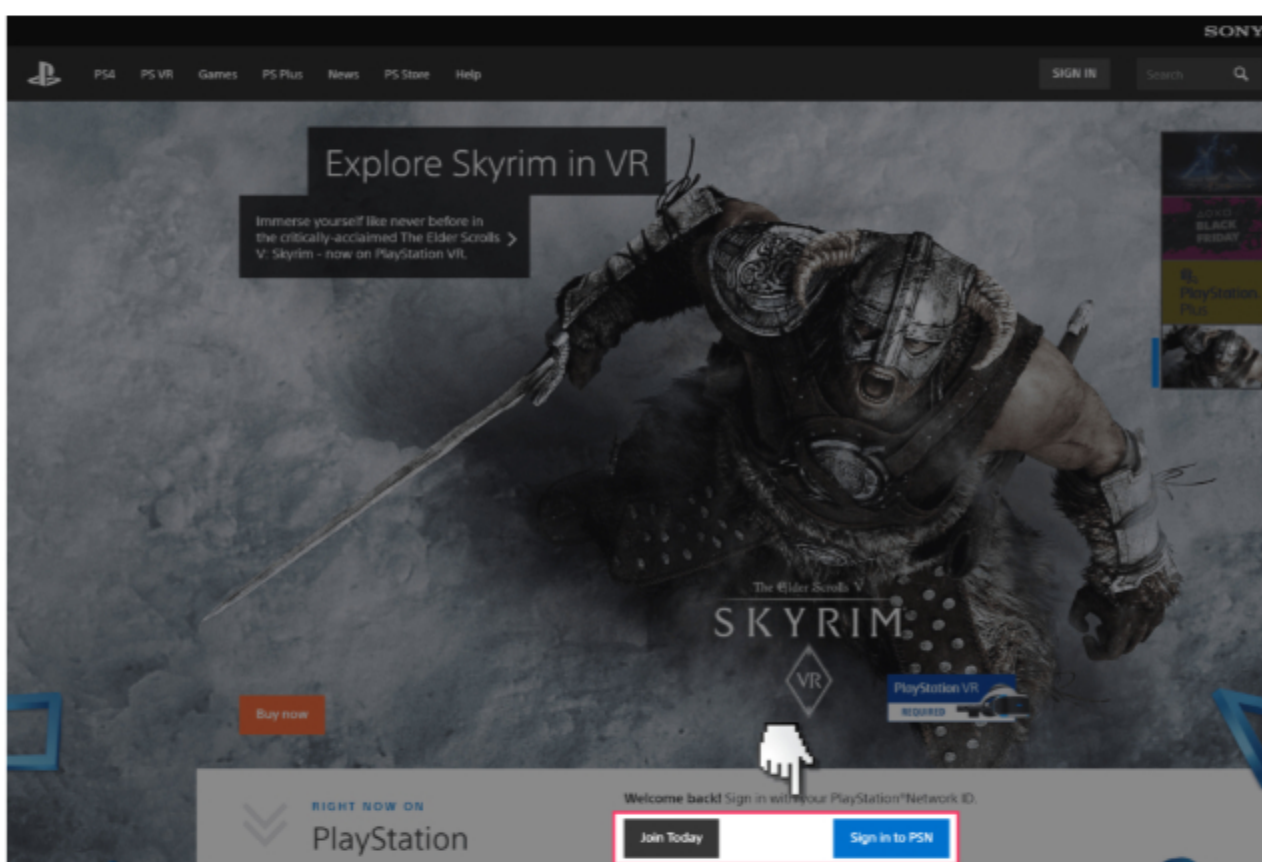
In App purchasing



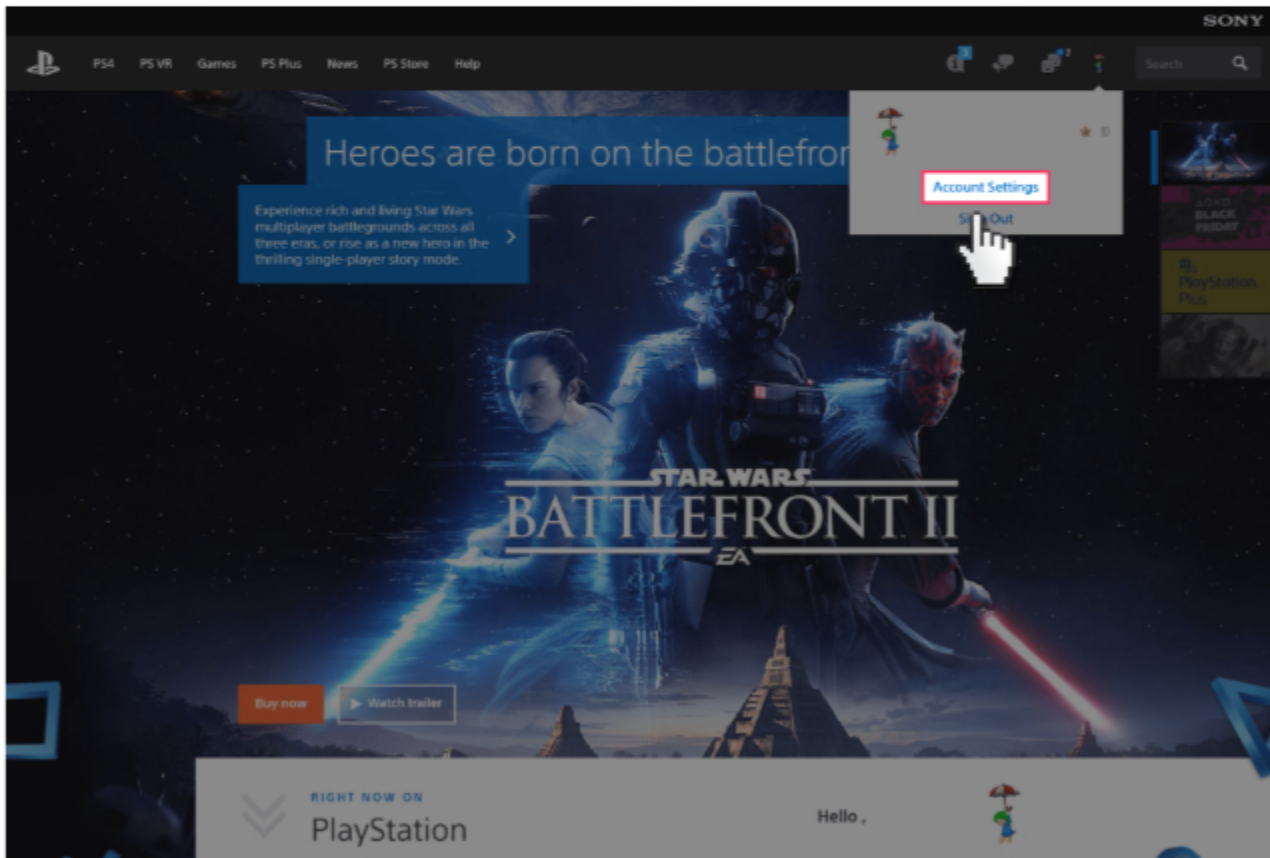
Inappropriate content

Step by Step instructions

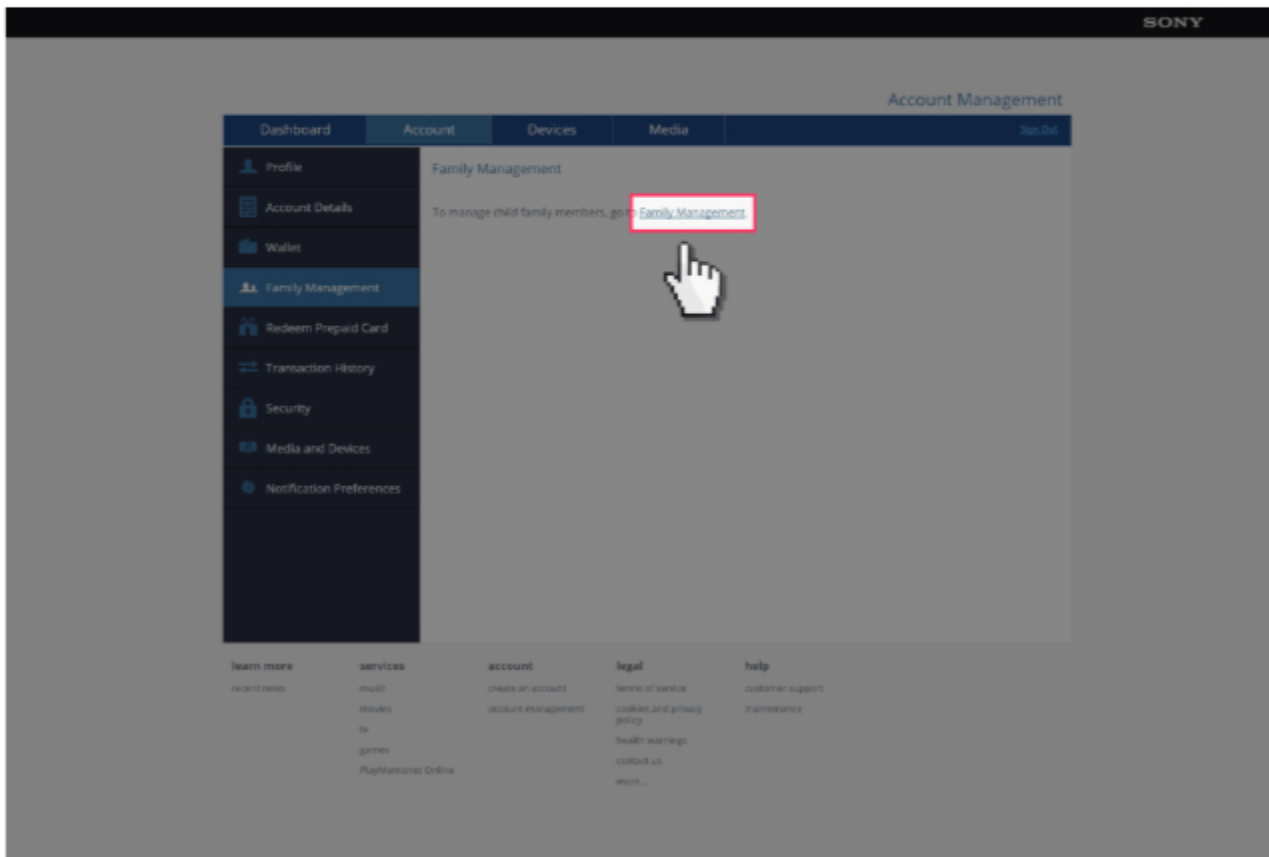
1. Go to www.playstation.com if you need to create a parental/master PlayStation Network account then click on “Join Today” and follow the steps otherwise click on “Sign in to PSN”.



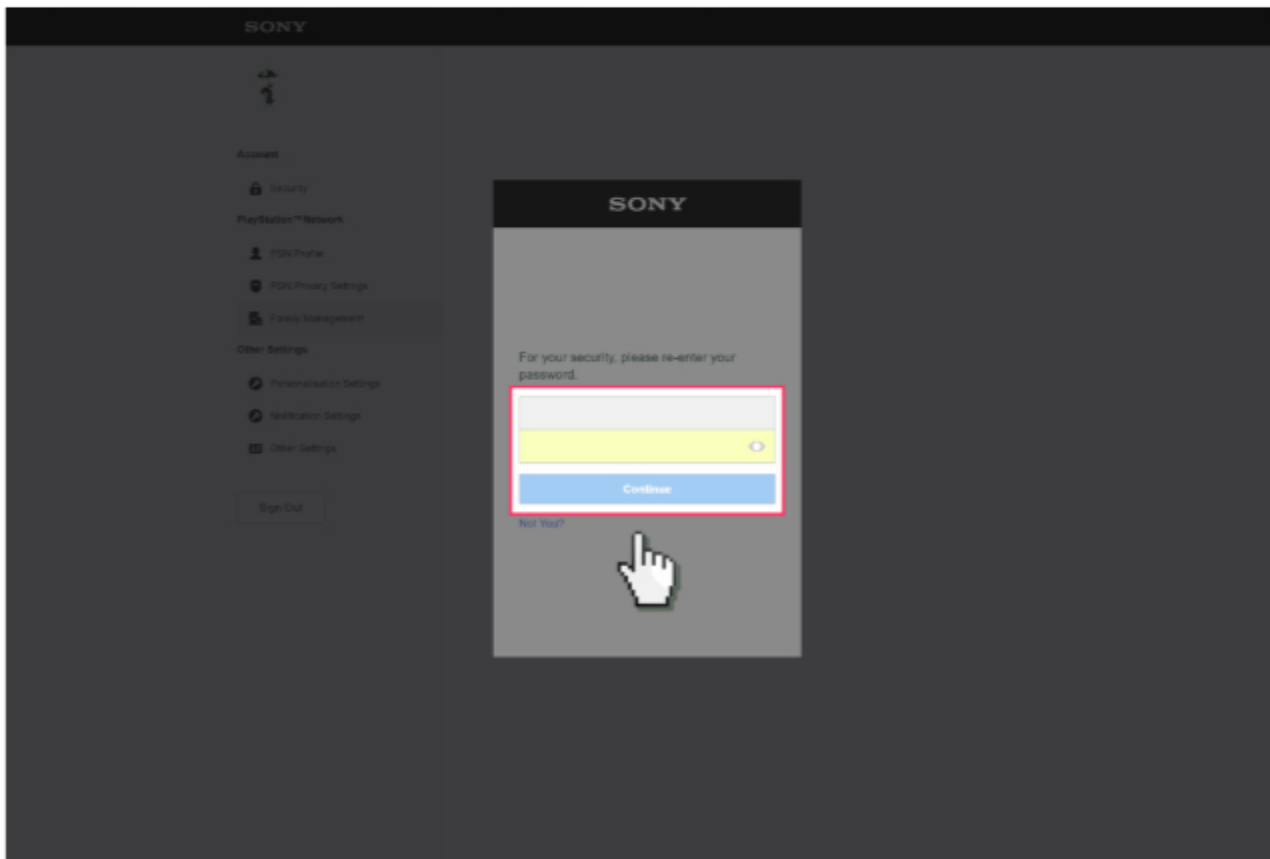
2. Once signed in click on the link to “Account Settings” and then confirm your log in details.



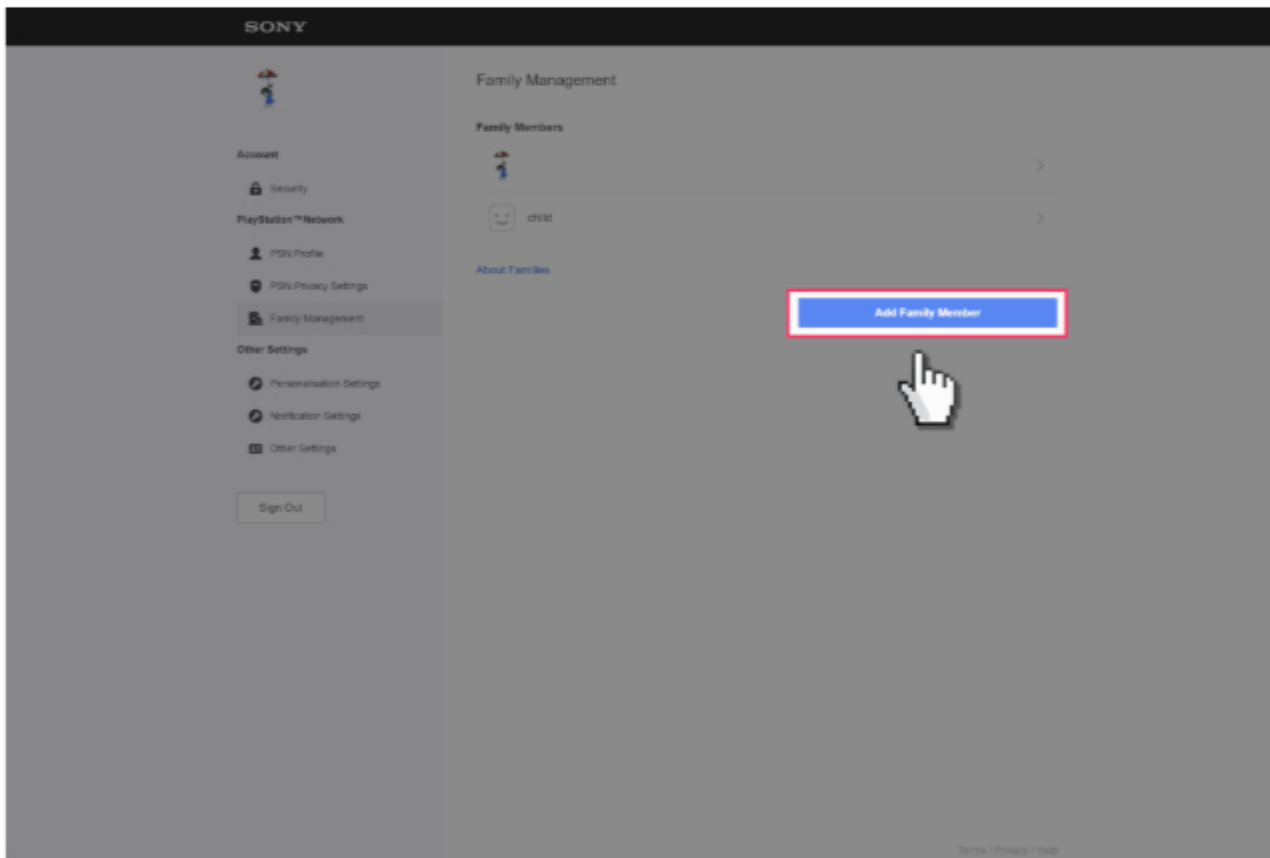
3. Select the “Family Management” tab and then click on “Family Management”. Click “OK” to confirm.



4. You will need to confirm your account details again. Click “Continue”.



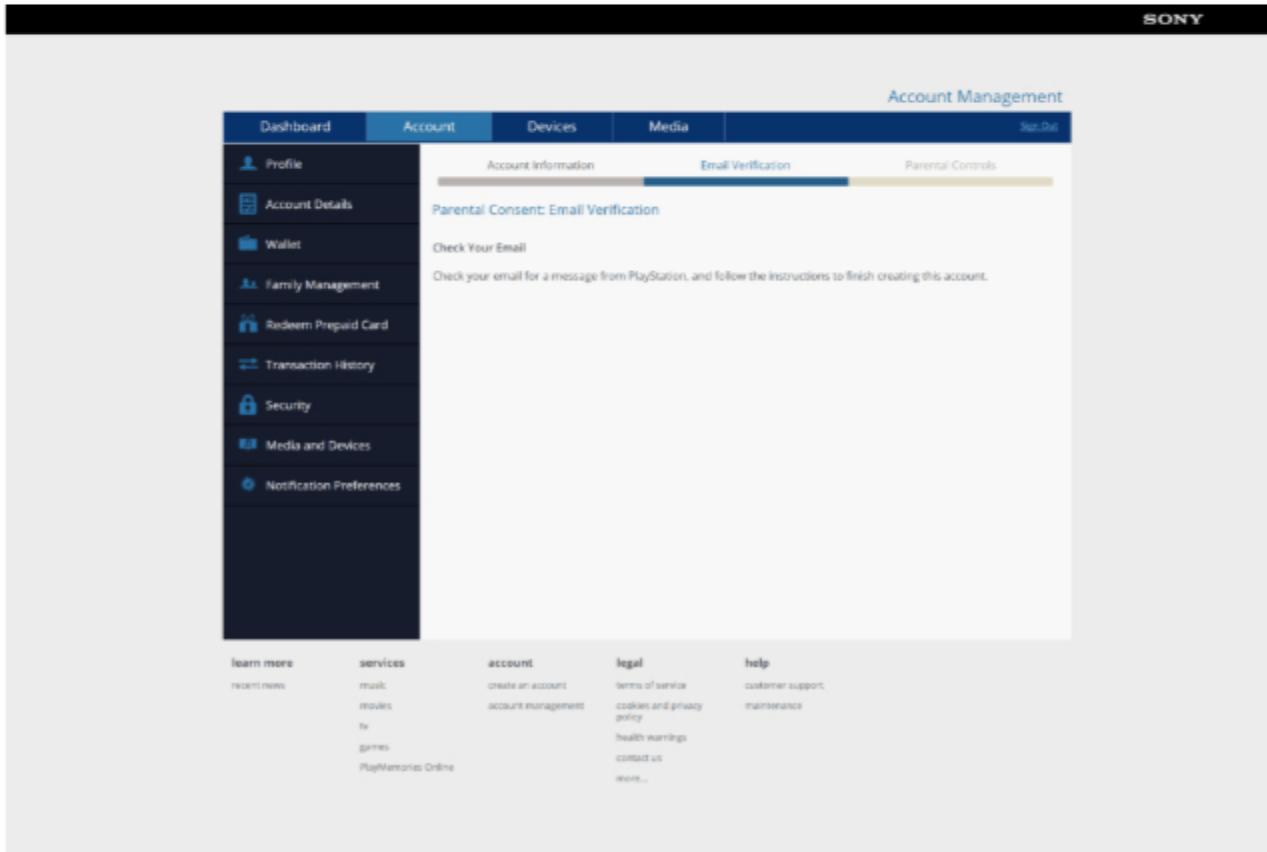
5. Click on “Add Family Member” then Click on “OK”.



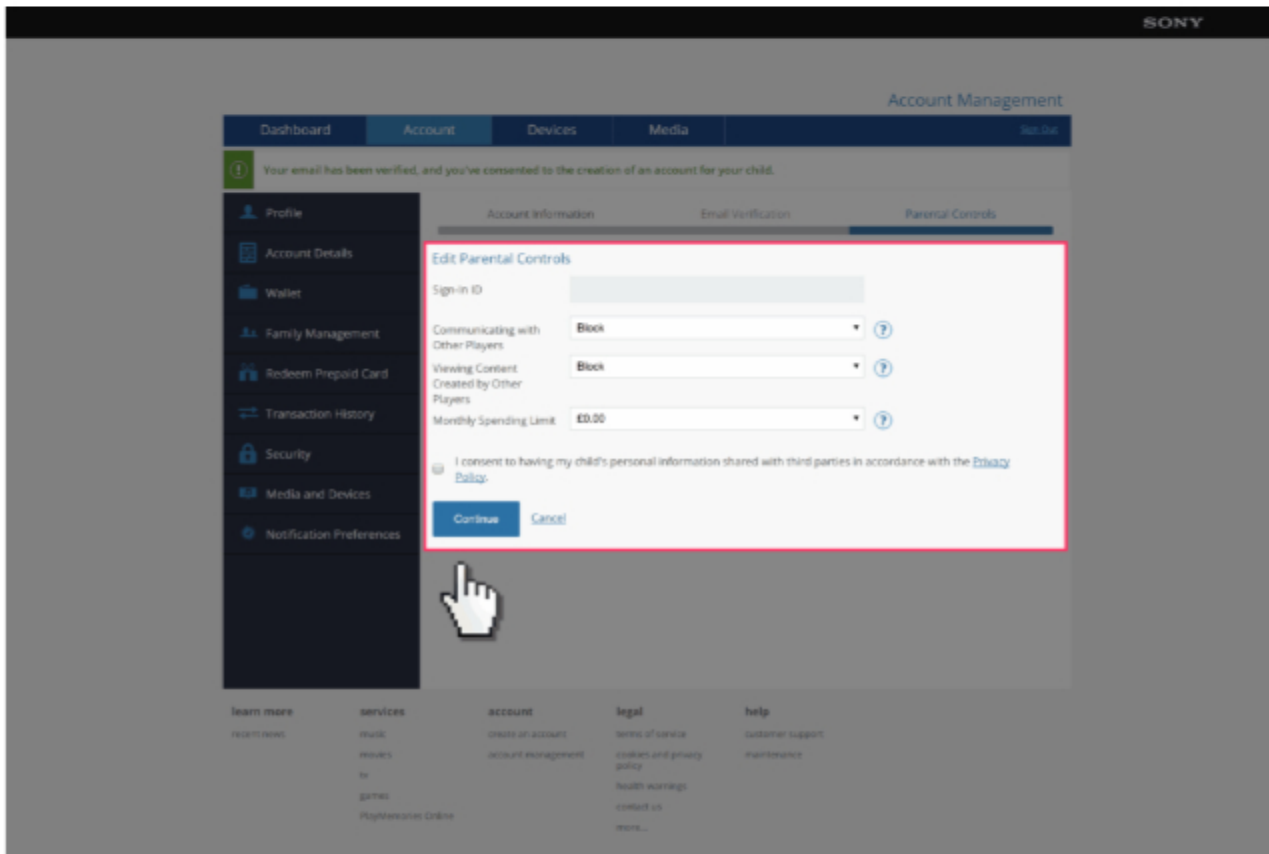
6. Fill out the details for your child. Use their email address or your own. The username and password to use for this account are generated on this page. Click "I Agree. Continue" when finished.

The screenshot shows the Sony Account Management interface. At the top right, the Sony logo and 'Account Management' are visible. A navigation bar includes 'Dashboard', 'Account', 'Devices', 'Media', and 'My Site'. A left sidebar lists menu items: Profile, Account Details, Wallet, Family Management, Redeem Prepaid Card, Transaction History, Security, Media and Devices, and Notification Preferences. The main content area is titled 'Add a Child to Your Family' and contains the following fields: 'Sign-in ID' (Email Address, e.g. myname@example.com), 'Date of Birth' (Day, Month, Year dropdowns), 'Gender' (Male, Female radio buttons), 'Create Password' (Minimum of 8 characters, Password strength indicator), and 'Confirm Password'. Below the form, there is explanatory text about child accounts and a 'Privacy Policy' link. At the bottom of the form are 'I Agree. Continue.' and 'Cancel' buttons. A hand cursor icon is positioned over the 'I Agree. Continue.' button. At the bottom of the page, there are four columns of links: 'learn more' (recent news), 'services' (music, movies, tv, games, PlayStation Online), 'account' (create an account, account management), 'help' (customer support, maintenance), and 'info' (privacy policy, health warnings, contact us, more...).

7. You will now need to access the email account of your parental/master account to verify the creation of the sub-account. Click the link in the email and then move on to the next step.



8. We can now set Parental Controls for your child's account. Select if you would like your child to be able to “Communicate with Other Players”, “Viewing Content Created by Other Players”, and set a “Monthly Spending Limit”. Once select “Consent” and then “Continue”.



9. You have now created an account for your child that they can log into PlayStation devices with.

