

Brereton CE Primary School

19th March 2021



Interviews

This week we have appointed two new members of staff.

We will send out further details as soon as we are able to.

Well done to all of Y2 and Y3 who took part in the remote lesson observations. A special well done and thank you to the Y4 and Y5 pupils who also met with the candidates to ask questions; you were incredibly professional and welcoming!



Easter Services at St Oswald's

We are starting to re-open over Easter. Services are as follows;

Palm Sunday 28th March 10.30am Service in church

Stations of the Cross 30th March Facebook service (Tuesday)

Maundy Thursday 1st April Facebook Service

Good Friday 2nd April Facebook Service

Easter Sunday 4th April 10.30am Service in church followed by Easter Egg Rolling

Please join us in church (please contact me to reserve a place!)

Rev. Sandi

01477 533263

stoswalds.brereton@gmail.com



Easter Egg Raffle

We will be holding our annual Easter Egg raffle on Thursday 1st April. Tickets will be available to buy (in classrooms) from 22nd March.

Tickets are £1 each. Any donations of eggs would be gratefully received.



External Gates

All external gates will be locked during school hours. If you need to come to the office, please go to the gate on School Lane and ring the buzzer to alert Reception.

The gate on Newcastle Road will be unlocked before and after school to allow

for dropping off and picking up at

Bears. The padlock may be on the gate but it should not affect the opening. The gate on School Lane will be closed and Reception is not always manned outside of school hours so please use the Newcastle Road entrance.



On leaving the site you can exit onto School Lane and there is a green button on the wall (outside Mr Collier's classroom) which will release the gate.

We appreciate that these are new operations to get used to (staff are finding it tricky too!) but I am sure you would agree it makes our site incredibly secure and therefore safe.



Love God, love learning, love one another.

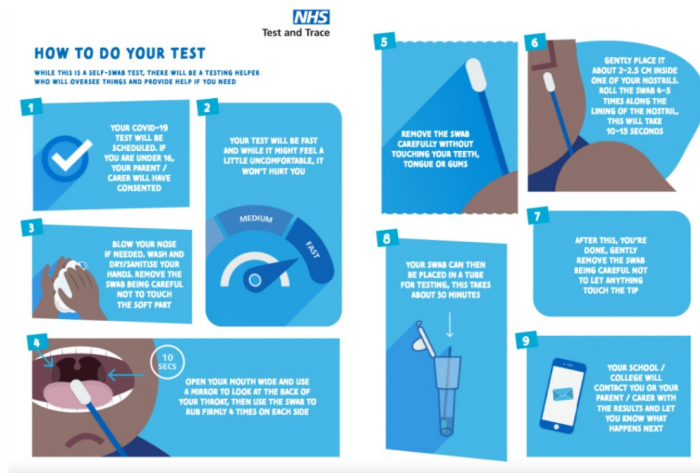
Matthew 20: 36-40





Lateral Flow Device Testing

Please see the attached information from Cheshire East.



Play Area

Thank you to everyone supporting our school remaining open by minimising time in the play area and avoiding busy periods. It really is appreciated.

A reminder, the current guidance around parks is as follows:

“Under the national lockdown announced on 4 January outdoor public playgrounds can remain open. This is primarily for use by children who do not have access to private outdoor space, like their own garden. Although parents, guardians or carers can take children to a playground for exercise, they must not socialise with other people while there.

Social distancing guidelines should be followed wherever possible. This means a distance of 2 metres between people from different households”

The latest easing allows us to meet with one other outside but social distancing should still be observed. We would urge parents to be cautious. We are keeping children in year group bubbles throughout the school day in order to try and keep our school community as safe as possible. A

number of our families have vulnerable members who could become very poorly and we want to do what we can to keep them safe.

Track and Trace

School will continue to operate Track and Trace. Please call school if you or a member of your household has symptoms. Please e-mail covid@breretonprimary.org.uk outside of school hours.

Writing Winners

A huge well done to Lilly (Y4) and James (Rec) who this week learnt that they were the winners of our Showbie writing competitions.



Get Set for Tokyo

This week Mr McAulay introduced the Travel to Tokyo challenge. The aim is to walk to Tokyo and all activity can be logged and is converted to kilometres.

Just visit <https://www.getset.co.uk/travel-tokyo/log-activity>

Type in the school's postcode (CW11 1RN) and selected 'School Team.'

More information can be found at <http://www.breretonprimaryschool.org.uk/page/get-set-for-tokyo/98915>



Love God, love learning, love one another.

Matthew 20: 36-40

